



Interstate Threaded Products

WHERE MANUFACTURING AND CUSTOMER SERVICE UNITE.

COMPANY OVERVIEW

Founded in 1973, our original business model was distributing threaded rod and pipe hangers to the fire sprinkler industry. Within just a few years, responding to market and economic changes and by identifying emerging customer needs accurately, Interstate Threaded Products (ITP) refocused our vision and mission.

By the early 1980s, in addition to our established distribution business, we committed ourselves to building a world-class manufacturing process to fill the growing need for custom-designed items. In parallel, we envisioned an off-the-shelf stock inventory that would fulfill our customers' standard parts requirements. And quickly.

Today, ITP has achieved a leadership position in manufacturing and distributing quality threaded fasteners. Our combined manufacturing and warehouse facilities occupy over 100,000 square feet and house more than 1,600 unique parts. Our large inventory of stock parts is designed to ensure fast delivery and our manufacturing plant is tooled to fabricate special orders to your exact specifications in any quantity required.

Service Philosophy

Our commitment to service begins with a core belief that our customers need their orders fulfilled accurately and delivered in the timeliest fashion. Our customers can depend on us to be knowledgeable about their needs, to be responsive, courteous, friendly and fair. Our goal: to be a trusted and reliable solution provider – a partner that understands that there is no margin for down time in your business.

Quality Assurance / Standards

ITP prides itself in our quality management system, which has been established as compliant with the following standards:

- ▶ ISO 9001 Compliant
- ▶ Fastener Quality Act (FQA99 Revision)
- ▶ IFI Standards (Industrial Fasteners Institute)

The requirements specified are primarily aimed at achieving customer satisfaction by preventing nonconformity at all stages and continuously improving our processes.

Industries Served

Whether your business is building the nation's infrastructure, sustaining it, keeping the electrical grid up and running or waterways flowing, ITP is there. In fact, you can find us in a wide array of industries including: commercial construction, agriculture, highway construction, industrial, electrical, plumbing and mechanical contracting work, utility enterprises, power generation, microwave tower industries, and petrochemical.



Interstate Threaded Products specializes in the fastener needs of such industries as agriculture, utilities, microwave towers, petrochemical, and construction.



MANUFACTURING OVERVIEW

With over three decades of manufacturing expertise, versatile equipment, and highly trained personnel, ITP is a leader in manufacturing u-bolts, anchor bolts, and other specialty items – made to your exact specification in many materials including low carbon steel, stainless steel, and alloys. Should your project require an item not found in our stock inventory, just let us know.

Our manufacturing capabilities include roll threading, cut threading, drawing and straightening wire, bending, shearing, sawing, welding, drilling and chamfering. We partner with several select vendors to provide plating, galvanizing, and heat treating applications. Custom packaging and direct shipments are also available to better serve your needs.

Equipment

As a result of our expansion plan of about 10% per year since 2001, our plant production facility is now approximately 60,000 square feet. Over the last few years, we have also added seven fully automated machines in three different areas of the facility. New capital equipment includes a fully automated u-bolt machine, a u-bolt bender, a bar shear, three planetary thread rollers, and one stamping machine. Currently, we have six straightening and cutting machines, eight bar shears/saws, 30 threading machines and 14 bending machines with the ability to bend up to 1" diameters for u-bolts in high volume. We also have the ability to bend larger diameters for anchor bolts up to 3". Our thread rolling capabilities are 8-32" to 2" and can cut thread from product from 1/4" to 4".



MANUFACTURING OVERVIEW

MANUFACTURING SPECIALTIES

ITP is known for its ability to provide quality, specially designed parts for its customers. Whether it is a multiple bend part or a basic u-bolt, we have the capability to manufacture them with the customer's satisfaction in mind. ITP can domestically manufacture and inventory threaded rod in a wide variety of materials, threads, and finishes. We can also domestically produce and stock standard size anchor bolts, u-bolts and eye bolts, double-end, single-end and fully threaded studs or rods.

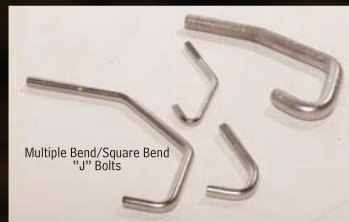
With the expertise provided by our trained design and manufacturing teams, you can count on your parts being fabricated to your exact specifications in a timely and professional manner. We remain committed to the quality control and reliability required to meet and exceed your expectations and standards.



Cabinet Handles, Double Threaded Anchor Bolt, Bent Bar w/Welded Flat Washer



Specially: Bent Hanger Rods



Multiple Bend/Square Bend "J" Bolts



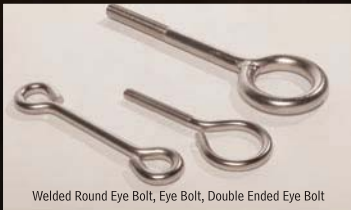
Specially: Diamond Knurled U-Bolts



Pipe Leveling Plate & Rod



Bent Eye Bolts



Welded Round Eye Bolt, Eye Bolt, Double Ended Eye Bolt



Multiple Bend / Square Bend "J" Bolts



Multiple Bend "J" Bolts

STOCK AVAILABILITY

Should your project require stock items, call on us. We are very proud of our 60,000 square foot warehouse facility that houses over 1,600 unique parts. Because we understand that your success depends on a responsive and reliable partner, we work under mission-critical deadlines to fulfill your order accurately and deliver it to you. And fast!

INVENTORIED STOCK PARTS*:

All Thread Rod National Coarse



Low Carbon Steel Plain - 1/4" - 2"
 Low Carbon Steel Zinc I - 8-32" - 2"
 Low Carbon Steel Zinc II - 3/8", 1/2", 5/8"
 Low Carbon Steel HDG - 3/8" - 2"
 A193 Grade B7 Plain - 1/4" - 2"
 A193 Grade B7 Plated (ZNI & ZNI) - 1/4" - 1 1/2"
 304 Stainless Steel - 1/4" - 1 1/2"
 316 Stainless Steel - 1/4" - 1 1/2"
 Acme - 3/8" - 1 1/2"
 Grade 5 (A449) - 1/2" - 1 1/2"
 Grade 8 (A354BD) - 5/8" - 1 1/2"

All Thread Rod National Fine



Low Carbon Steel Plain - 1/4" - 1 1/2"
 Low Carbon Steel Zinc I - 1/4" - 1 1/2"
 A193 Grade B7 Plain - 1/4" - 1 1/2"
 A193 Grade B7 Plated (ZNI & ZNI) - 1/4" - 1 1/2"
 Machine Screw Size LC Plated - (8-32), (10-24), (10-32), (12-24)

All Thread Rod Left Hand



Low Carbon Steel Plain - 1/4" - 1 1/2"

Foundation Anchor Bolts



3/8" - 1 1/4" Dia. / Lengths from 6" - 36"
 Plain
 Hot Dipped Galvanized

Standard U-Bolts



Standard Tangent Style - Plated and 304 SS Style #137's - Low Carbon Plated and HDG, 304 SS, 316 SS U-Bolt Plates (Plated)

Plated Eye Bolts



1/4" - 1/2" Dia. Rod

Key Stock

Plated (Square Only) - 1/8" - 2" (12 in. lengths)
 Plain (Square Only) - 1/8" - 2" (12 ft. lengths)

All Thread Studs*



Low Carbon Steel (Plain, Plated)

Hex Nuts*



Plain Finished Hex Nuts
 Plated Finished Hex Nuts
 Hot Dipped Galvanized (HDG) Finished Hex Nuts
 Plain 2H Hex Nuts
 Plain Heavy Hex Nuts
 Stainless Steel (304 SS, 316 SS) Finished Hex Nuts
 HDG Heavy Hex Nuts

USS Flat Washers*



Plain
 Plated
 HDG

Raw Materials Stocked

A36, A449, A193 B7, B8, B8M, A354BD, 304 Stainless, 316 Stainless, F1554 GRD 36, GRD 55

NOTE: We work closely with five of the top distributors in the US for our domestic materials and with one of the most reputable overseas suppliers from China.

* If we don't carry it, we can get it. Ask about availability when requesting any items.

Call today for all your fastener needs!



Where Manufacturing
and Customer Service Unite

TOLL FREE: 888-420-3925 / LOCAL: 214-637-6720
FAX: 214-634-0330

SALES@INTERSTATETHREADEDPRODUCTS.COM
WWW.INTERSTATETHREADEDPRODUCTS.COM

INTERSTATE THREADED PRODUCTS
P. O. BOX 224429
DALLAS, TEXAS 75222

MANUFACTURING: 2200 SINGLETON BLVD., DALLAS, TX 75212
WAREHOUSE: 2930 HANSBORO AVE., DALLAS, TX 75233

ITP-07-007

©2007 INTERSTATE THREADED PRODUCTS

PRINTED IN THE U.S.A.